



*Innovation IT for large institutions and projects in science, healthcare and the public sector*

## ABOUT THE COMPANY

Silvermedia is an innovative IT company founded in 2002 by a group of passionate and talented teachers and graduates of AGH University of Science and Technology in Krakow, Poland. Its headquarters is located in Krakow, and has operated a branch in USA since 2010.

Silvermedia develops customized IT solutions for large and diverse institutions. We deploy a range of applications based on optimally meeting the needs of the client, whether that is professional web applications, applications for mobile devices such as smartphones, and/or desktop applications. Our primary experience is in developing unique solutions to facilitate tight cooperation between research institutions and industry experts and organizations from various domains.

In healthcare IT, the result of such cooperation has included state-of-the-art biomedical signal analysis algorithms and artificial intelligence based medical analysis algorithms. For the public sector, this has included customized information management platform solutions to enable, inter alia, information sharing, organizational efficiency, cost reduction and informatization of information.

Our team consists mostly of people with post-doctorate researchers, PhD graduates and candidates, and MSc graduates of the best Polish universities. Active cooperation with academic and R&D institutions provide us with continuous access to cutting edge technology and allows us to implement the most innovative solutions.

---

## OUR COMPANY FOLLOWS THREE MAIN PRINCIPLES IN ITS WORK



### **CUSTOMER CENTRICITY**

*We deeply value our customers, listening closely to their needs and developing a unique customized solution.*



### **INNOVATION**

*Our goal is to provide completely unique solutions with no competitors. We are active in developing and implementing new technologies and academic research thanks to our solid relationships with AGH-University of Science and Technology and Jagiellonian University, and also our active involvement in European Union's Seventh Framework Programme. We also have strong partnerships with major IT companies, who we cooperate on innovations with.*



### **CULTURE OF EXCELLENCE**

*We carefully select the best employees and offer them a high performing, stimulating yet enjoyable work environment.*

---

## GOALS



### **TO PROVIDE COMPREHENSIVE SERVICES TO ADDRESS EVERY ASPECT OF OUR CUSTOMER'S NEEDS**

*We focus on delivering an outstanding and holistic service to our customer, exceeding their expectations and ensuring optimal satisfaction. So strong is our focus that if we are not capable of addressing some of our customer's needs in the best way possible, we will recommend someone who will. Our strong network allows us to provide our customers with an extended set of services, including assistance in obtaining funding for projects, or support for expanding IT infrastructure.*



### **TO SET TRENDS AND DIRECTIONS IN THE SECTORS WE ARE ACTIVE IN**

*We are a visionary company, committed to making significant contributions to our specializations, especially e-health, telemedicine and biosciences. We are constantly evolving, trying to find best way possible to address challenges. We achieve this goal primarily through innovation and research avenues such as our strengthening relationships with universities, and our active involvement in the European Union's research and development innovation programs.*



### **TO CREATE IT SOLUTIONS WHICH MAKE A POSITIVE IMPACT ON SOCIETY**

*There is no greater pleasure for us than to see the fruit of our labor making a positive difference to society. We especially like to work on projects that bring new approaches and resolutions to our clients' desires, linking research and innovation with real-life scenarios and challenges.*



### **TO CREATE LONG LASTING MUTUALLY BENEFICIAL BUSINESS RELATIONSHIPS**

*We would like to develop long-lasting business relationships with all our stakeholders. Our customers take a special priority, a relationship we continue to develop and prioritize long after our services are completed. However it is not exclusive to the customer. All relationships we build with stakeholders: suppliers, technology partners, universities, potential partners, professors, government representatives and public administrators, are built and maintained. We see this as a core approach to achieving our values of innovation, customer centricity and excellence.*

# SELECTED SOLUTIONS



## HEALTH SCREENING

In 2010 we created and deployed a solution supporting a regional audiology screening program in Poland. The solution consists of centralized web-based information system for gathering and validating results, and mobile devices used to perform the screens in schools in rural areas. The mobile devices transmitted the results over the Internet to the central system. In 2010 the solution was used to screen over 95,000 children in over 4,500 schools over a period of 4 months.

**MOBILE DEVICES MANUFACTURING, WEB PLATFORM, PROCESS MANAGEMENT, DATA ANALYSIS, PROGRAM MANAGEMENT, DATA COLLECTION, DATA INTEGRATION, E-HEALTH**



## EDUCATION PLATFORM

We created and deployed an integrated web platform for educational administration management in the biggest cities in Poland. Its main features were recruitment for schools at all levels of education and the validation of compulsory education. Over the years it processed the data of 100,000+ students.

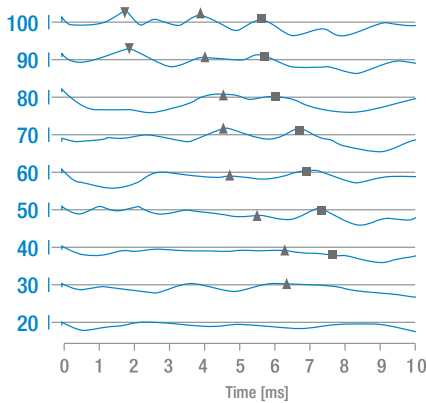
**IT CONSULTING, WEB PLATFORM, DATA INTEGRATION, PROCESS MANAGEMENT, DATA ANALYSIS**



## ASSETMANAGER

We took part in the creation of a solution for managing flood control infrastructure in the United States. It consisted of a central information system for managing and monitoring public asset maintenance processes, and mobile device applications equipped with GPS technology used for infrastructure inventory, reporting of work progress and delegating tasks.

**WEB PLATFORM, MOBILE DEVICES APPLICATION, PROCESS MANAGEMENT, DATA ANALYSIS, PROGRAM MANAGEMENT, DATA COLLECTION**



## ABR

### BIOSIGNAL ANALYSIS

We installed a diagnosis support system for Auditory Brainstem Response (ABR) examinations. This included an advanced, self-learning biosignal processing algorithm for marking the specific parts of the signal that are crucial for interpreting the examination result and diagnosis process.

**DATA INTEGRATION,  
SIGNAL PROCESSING,  
DIAGNOSIS SUPPORT,  
E-HEALTH**



### SYSTEM INTEGRATION

In 2011 we finished a 1 year contract to create an integrated information system for the Institute of Physiology and Pathology of Hearing in Warsaw. The goal of the project was to integrate the existing systems, build a data warehouse and apply health intelligence tools for scientific and medical data analysis.

**CENTRAL INFORMATION  
SYSTEM, INTEGRATION,  
DATA WAREHOUSING,  
HEALTH INTELLIGENCE**

### QUALITY CERTIFICATIONS



To ensure the best possible quality of our services, Silvermedia has obtained ISO Certifications: ISO 9001 and ISO 13485.



**Certificate ISO: 9001** - Silvermedia meets the requirements of its Quality Management System.



**Certificate of ISO: 13485** - Silvermedia meets the requirements of a quality management system for the design and manufacture of medical devices.



**CE certificate** - Silvermedia possesses a CE certificate for our Silvermedic Cardio solution.

### PARTNERS AND MEMBERSHIP



As an innovative company, Silvermedia cooperates with major scientific and R&D institutions in Poland, including AGH University of Science and Technology, Jagiellonian University Medical College, Medical University of Warsaw and Children's Memorial Health Institute in Warsaw. We are members of clusters:



We are technology partners of the Association of Polish Counties.

### CONTACT INFORMATION /

### SILVERMEDIA

#### ADDRESS /

Buma Square Business Park, Wadowicka 6, 30-415 Kraków, Poland

#### CONTACT /

Phone: +48 12 3760250 / Fax: +48 12 3760251 / E-mail: office@silvermedia.eu

#### OFFICIAL WEBSITE /

<http://www.silvermedia.eu>